



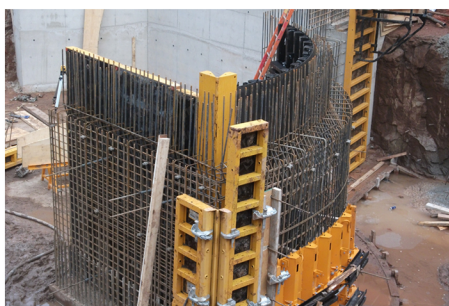
PHOTO: CHAPEL HILL MIRFIELD

This year we saw the introduction of ORMA wall formwork, again a brand new system with some excellent new features, such as the ability to lift up to 60M2 in one go, along with many other features.

Its first project featured in Halifax for DCT Civil Engineering, the project was for a 500 metre long retaining wall 3.3 metres in height. The main selling feature on this project was only 2 ties in the height were needed to construct the walls.

## ALDERLEY EDGE APARTMENTS

FORMWORK SYSTEM: ORMA & BIRA



This wall changed thickness from 450 mil to 600 mil at the angled corner and proved quite a challenging design which Orma and Bira combined using hinged corners was the only solution for this radius stairwell on the site.

## CHAPEL HILL MIRFIELD

FORMWORK SYSTEM: BIRA



The wall height of 6.6 metres was achieved using BIRA panels stacked – with the grout check feature stopping any grout loss in the horizontal joint an F4 finish was achieved. This was the only system available which ticked all the boxes for the site who's craneage and site access were a challenge for the site team to say the least.

## BENWELL PUMPING STATION

FORMWORK SYSTEM: ORMA  
LOCATION: NEWCASTLE



Poured in one as a 60 metre long stretch in total to eliminate any joints for this watertight tank was the sites requirement for this project –this request was made on the Wednesday and our operations team prepared the delivery for the Friday helping the contractor to jump one week ahead of programme.

## HARTON CHILTON

FORMWORK SYSTEM: ORMA



A 45 metre long stretch per pour (5 pours) – 3.3 metres high, using 2 ties in the height really saved time yet again for these users. This is just one of a number of contracts running for the customer at present who is experiencing the benefits of Orma wall formwork.